

Transport to Runde

By car from outside or within the region. Runde is connected to the mainland (Ørsta/Volda) through a system of bridges, tunnels and ferries.

By flight to nearby airports at Ålesund-Vigra (50km) or Volda- Hovden (50km).

By coastal steamer 'Hurtigruten' from Bergen and Trondheim to Torvik. Torvik-Runde is 15km by car.

Runde Environmental Centre will be happy to assist with transport arrangements from nearby traffic centres to the island.

Contacts

Nils Roar Hareide
nilsroar@rundecentre.no
tel: +47-412-91-107

Lars Golmen
lars@rundecentre.no
tel: +47-478-90-957

Annelise Chapman
lise@rundecentre.no
tel: +47-907-50-501

Liesbeth ten Cate
liesbeth@rundecentre.no
tel: +47-901-83-455

**Runde
Environmental
Centre
will be ideally suited for:**

Marine and climate research

Environmental monitoring

Field courses

Research visits

Sabbaticals

Scientific meetings

Working group assemblies

**Testing of research
equipment and prototypes**

**PLEASE CONTACT US FOR
FURTHER INFORMATION**

Runde Environmental Centre
Mailing address: 6096 Runde, Norway
Email: post@rundecentre.no
Website: www.rundecentre.no

**Facilities for marine research and monitoring,
environmental science and education**

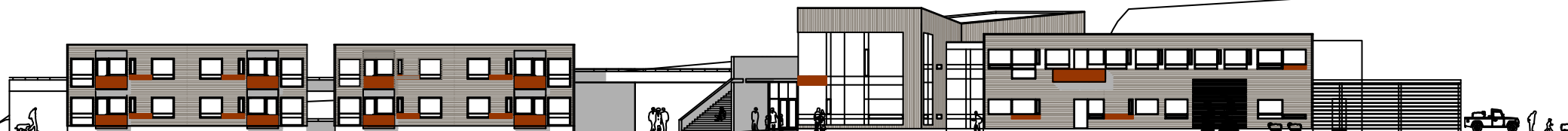
Opening date: June 2009



Runde Environmental Centre



Aerial view of Runde



Key facts about Runde

The island of Runde is located on Norway's western coast, at 62° northern latitude, approximately 25km from the nearest town of Ålesund. Influenced by warm waters of the Gulf Stream, the region has a mild coastal climate with comfortable summer temperatures between 15 and 20 °C. Runde's exposed cliffs are home to many thousands of seabirds, representing the most southerly seabird colonies in Norway. Highly productive coastal waters are spawning grounds for some of Norway's most important fish populations, e.g. herring, saithe, haddock and cod, and ancient deep water corals are growing just kilometres off shore.

The island is surrounded by numerous environment types with great biological diversity, including shallow coastal waters, deep fjords and the continental shelf. Within just 50 kilometres off Runde, the continental shelf starts sloping to a maximum of 3000 meter water depth. The fact that Runde's natural environment is vulnerable to change makes it an important research location, both nationally and internationally.

Establishment of Runde Environmental Centre

Facilities and infrastructure at Runde Environmental Centre will support various scientific disciplines, including biology, oceanography, meteorology, pollution research and environmental technology. Utilisation of the centre by Norwegian, as well as international researchers, will raise the profile of the Møre region in broader spatial contexts.

Key roles for Runde Environmental Centre consist of providing infrastructure for environmental research, monitoring and education, and facilitating the development of sustainable technologies for fisheries, marine resource use and renewable energy production.

Runde Environmental Centre has been designed to modern standards of energy efficiency. It will house laboratories and offices and provide accommodation for visiting researchers. In addition, the centre will have an auditorium, a café and a public information area featuring exhibits on important environmental topics, such as biological processes of the Norwegian Sea ecosystem, or climate effects on seabirds, fish and plankton.

Regionally, development of the centre has broad support from both, public and private sectors. Whereas the centre's infrastructure is built and owned by Runde Miljøbygg AS, a limited company consisting of predominantly private shareholders, the direction, mandate and mission of the centre will be administered by a hands-off private association.

Construction of Runde Environmental Centre has been ongoing since September 2007.

Facilities at Runde Environmental Centre

Office wing

The westernmost wing of the building will house offices, including six separate rooms and an area with several open-plan office spaces for short-term visitors. Office facilities will include options for computer rental, printer access, telephone and fax connections and high speed internet access.

Laboratories (1st floor)

Laboratories will be used by both, visiting scientists and long-term leaseholders. Division of the total laboratory space area of 320 m² will be adjusted according to demand of wet and dry lab sections. Wet labs will be equipped with plumbing, lab benches, seawater supply and floor drains, and will be part of the washing station for oiled seabirds.

Accommodation

The centre will house six apartment units available for rent by visiting researchers. In addition, larger groups will be able to rent additional accommodation on the island.

Café / restaurant

The café is designed for a capacity of approximately 60 guests, but will be able to accommodate up to 100 persons for special events. Visiting researchers have the option to receive full meal service at the restaurant.

Auditorium

The auditorium will seat 60-80 persons.

Public information centre

Activities of the research centre will be reflected in the public information area, addressing local residents as well as visiting tourists from Norway and beyond. Primary exhibition topics will include the environment, climate, the island's natural habitat and the development of sustainable marine industries. Information on renewable energies and climate technologies will be central, and will incorporate model constructions of ocean energy systems. A separate exhibition will feature the spectacular 1725 wreckage of the Dutch sailing vessel Akerendam, and the 1992 Arisan oil spill in the area.

Harbour access

In addition to the main building, Runde Environmental Centre will occupy a 600m² harbour building with direct wharf access